

FLOWSERVE[®]

Polyvalve™

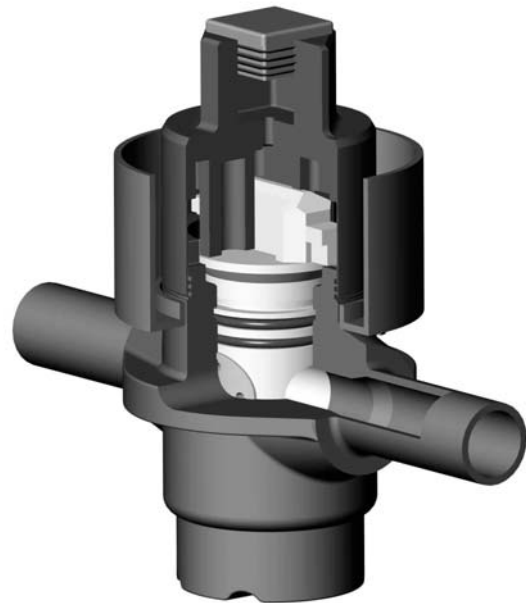
Poly-Water™

Polyvalve for water applications

Polyethylene Ball & Plug Valves

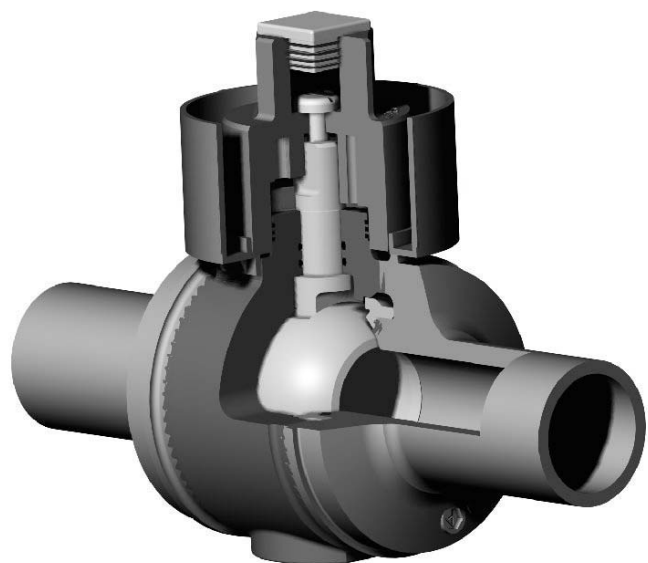
Poly-Water™ Plug Valve for Water Applications

- Dimensions 20 to 40 mm.
- No metal parts.
- One-piece body shell.
- Pressure energised seals in the plug design feature 2 specially moulded EPDM inserts which provide tight shut-off in both directions.
- Stem and ball are combined into a single rugged part made of moulded high strength plastic.
- Flanged end configuration available.



Poly-Water™ Ball Valve for Water Applications

- Dimensions 50 to 315 mm.
- No metal parts.
- Butt-fused body shell.
- Bubble-tight shut-off from dual EPDM seats.
- Multiple elastomeric stem seals.
- Flanged end configuration available.



NO CORROSION, NO LEAK

Poly-Water™ Valve Availability

Polyvalves™ have been installed since 1976 and are in use throughout the world.

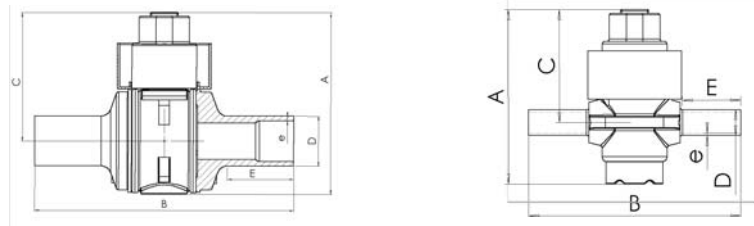
Poly-Water™ Valve Availability Chart

Valve Size (mm)	Body Pieces	Break Torque at 23°C (N.m)	Run Torque at 23°C (N.m)	Pressure Drop Equiv. Meter of Pipe
20	1	15	8	0,61
25	1			0,97
32	1			1,16
40	1			2,92
50	3	20	10	1,16
63	3			2,92
75	3			3,51
90	3			4,29
110	3	35	15	5,41
125	3			6,08
160	3			7,39
180	3	50	35	9,12
200	3			10,64
225	3			12,25
315	3	90	70	3,22

The connection to the pipe can be made through :

- Butt Fusion.
- Electro-fusion.
- Mechanical connection.

Dimensions



Size (mm)	Overall height (A) (mm)	Overall length (B) (mm)	Dimension Axis-Top (C) (mm)	Tube length (E) (mm)	Thickness SDR 11 (e) (mm)	Thickness SDR 17,6 (e) (mm)	Weight (kg)
20 - 20,3	217	250	140	63	3 - 3,4	2,3 - 2,7	0,75
25 - 25,3		263		73			
32 - 32,3					326		
40 - 40,4		228		348			
50 - 50,4	326		92	5,8 - 6,5	3,6 - 4,1	1.7	
63 - 63,4				397	105	6,8 - 7,6	4,3 - 4,9
75 - 75,5	8,2 - 9,2		5,2 - 5,9			2.0	
90 - 90,6	277	326	192	105	10 - 11,1	6,3 - 7,1	4.0
110 - 110,7					11,4 - 12,7	7,1 - 8	4.3
125 - 125,8							14,6 - 16,2
160 - 161	362	540	240	115	16,4 - 18,2	10,3 - 11,5	10.0
180 - 181,2					18,2 - 20,2	11,4 - 12,7	10.8
200 - 201,3							20,5 - 22,7
225 - 226,4	472.4	877	320	240	28,6 - 31,6	17,9 - 19,8	138
315 - 316,9	787	2127	528	762			

Note : Indicated dimensions refer to standard Poly-Water valves. Contact your FLOWERVE POLYVALVES S.A.S. representative for other dimensions.

Composition of the components

Item	Plug Design	Ball Design
Body	Polyethylene (PE100)	Polyethylene (PE100)
Plug/ Ball	Acetal	Polypropylene
Seat Retainer	N/A	Polypropylene
Seat	EPDM	EPDM
Stem	N/A	Acetal
Seals	EPDM	EPDM
Wrench Adapter	Polypropylene 30% fibreglass	Polypropylene 30% fibreglass
Adapter Screw	Phosphated steel	Polyamide 6

Maximum Allowable Service Pressures (bar)

Polyethylene Resin	SDR11	SDR17.6
PE100	16	9.6

Standards and Codes

- FLOWSERVE POLYVALVES S.A.S. Poly-Water™ complies with the following regulations:
NSF Standard 61 Drinking Water, System Components, Health Effects.
Suitable for use with PE pipe and tubing complying with AWWA C901 PREN 12201
"French circulaire DGS / VS4 n°99 / 305" dated 26 May 1999.
- FLOWSERVE POLYVALVES S.A.S. is qualified ISO 9002.

Applications

For use in :

- Drinking Water
- Water and Waste Water

With sizes up to 315mm FLOWSERVE POLYVALVES S.A.S. Poly-Water valves come in the widest range of sizes on the market.



Poly-Water™ is available for clockwise or anti-clockwise operations.

Flow Control Division Polyvalves S.A.S.
30, rue Jean Jaurès - 42240 Unieux - France
Tél. : 33 (0) 477 401 877 Fax : 33 (0) 477 563 095
Customer Service : 33 (0) 477 401 865
International : 33 (0) 477 401 870



Flow Control Division

TM indicates a trade mark of FLOWSERVE. Information given in this leaflet is made in good faith and based upon specific testing but does not, however, constitute a guarantee